

RDF Samples

Product Information

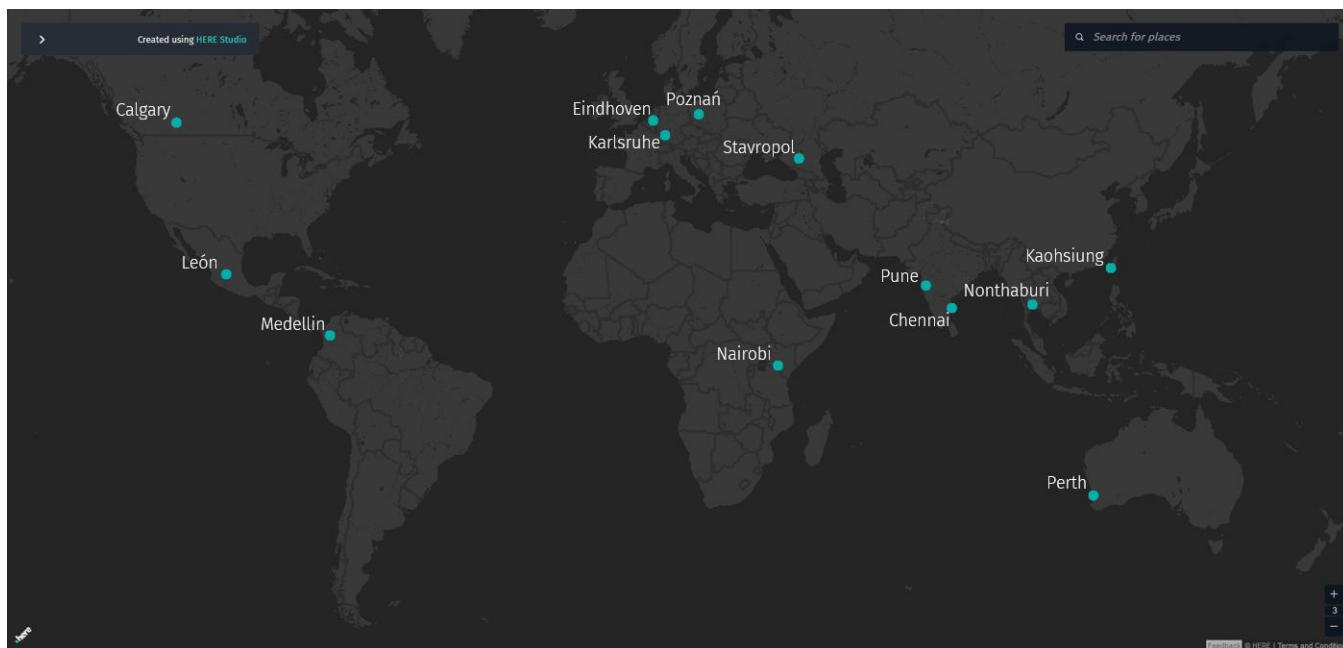
These release notes highlight some general information about **RDF Samples**.

RDF

RDF is a standard that provides a common reference model for organizations involved in the creation, update, supply, and application of referenced and structured road network data.

RDF enables road network data providers to use a common data publication reference model for their product definition, while allowing users to define their application independent of a specific data provider's model. The RDF is designed to support several application areas, such as Vehicle Navigation Systems, Highway Maintenance Systems, Road Transport Informatics, and Advanced Road Transport Telematics.

Provided Cities

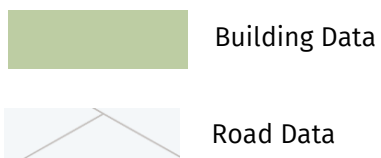


- Calgary, Canada
- Chennai, India
- Eindhoven, Netherlands
- Karlsruhe, Germany
- Kaohsiung, Taiwan
- León, Mexico
- Medellín, Colombia
- Nairobi, Kenya
- Nonthaburi, Thailand
- Perth, Australia
- Poznań, Poland
- Pune, India
- Stavropol, Russia

Sample visualization using HERE XYZ



Restaurant location and food types in Eindhoven

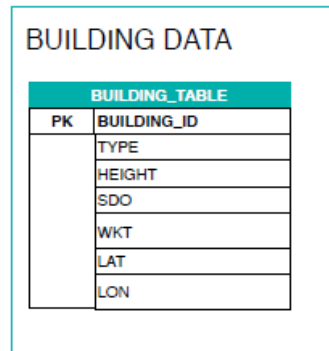
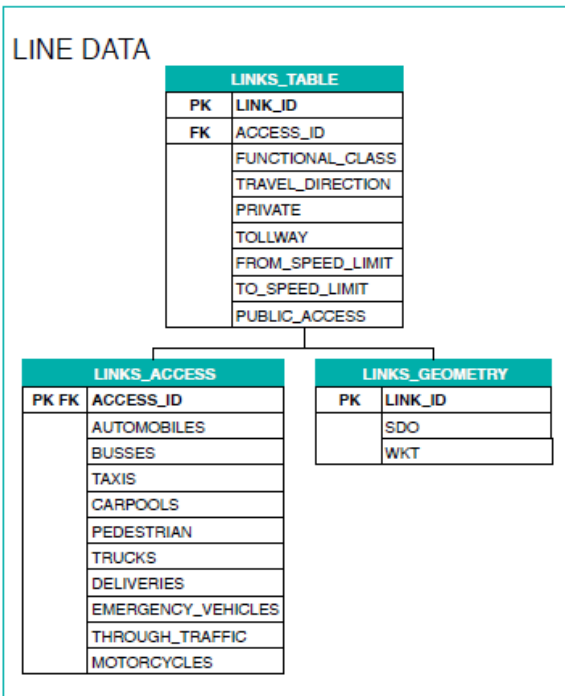
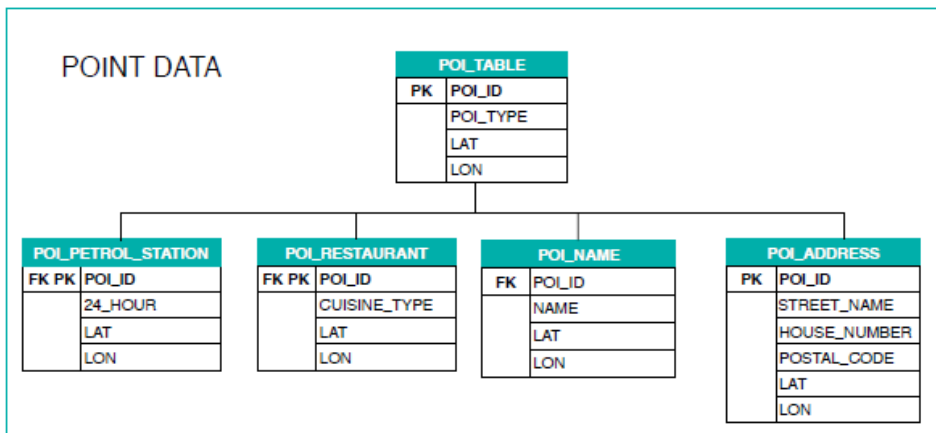


Data Operation

Due to text encoding, we advice to view data in Notepad ++ or open it in Excel by loading text data and setting encoding as Unicode UTF-8.

RDF Schema

**HERE Student Sample Data
Relation Data Format (RDF)**



Schema Overview
Version 1.0
Spatial Data Center of Excellence



Datasets availability

Location	2017 Release	2018 Release	2019 Release
Calgary, Canada	✓	✓	
Chennai, India	✓	✓	
Eindhoven, Netherlands	✓	✓	
Karlsruhe, Germany		✓	✓
Kaohsiung, Taiwan	✓	✓	
León, Mexico	✓	✓	
Medellin, Colombia	✓	✓	
Nairobi, Kenya	✓	✓	
Nonthaburi, Thailand	✓	✓	
Perth, Australia	✓	✓	
Poznań, Poland	✓	✓	
Pune, India	✓	✓	
Stavropol, Russia	✓	✓	

Database Quality

The Quality of the HERE Databases and customer satisfaction are our highest priority. To achieve this objective, we have established a comprehensive and rigorous set of quality checks and product validations. We have achieved ISO 9001 certification and apply ISO/TS 16949 best practices on the continued road to an integrated, company-wide quality management system. HERE strives to continually improve its processes, which helps the company remain the leading world class supplier of enhanced digital map products used for vehicle, consumer, business and governmental applications.

Legal Obligations and Copyrights

This document is provided to you in confidence, for the sole purpose of providing information about the Release Notes for the provided regions; the data is intended for educational purposes only and may not be distributed. It contains confidential information and may only be used for the purpose mentioned above. Any other use may cause irreparable harm to HERE, for which you may be held responsible.